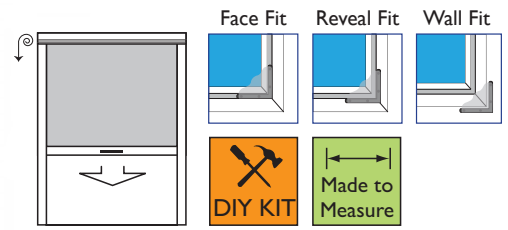




# Roller Screen for Windows 700 Series Top mounted - Pull down

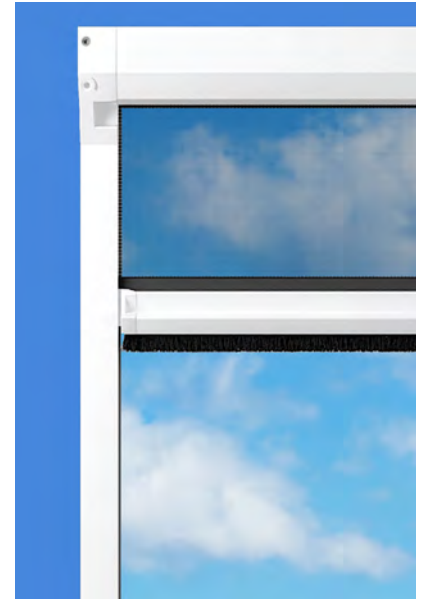


## Features

- Screens can be face fitted on to the window frame or the wall outside the reveal. They can also be reveal fitted. If your window opens out the screen will be fitted on the inside and vice versa.
- The mesh screen is operated using a handle on the edge of the mesh and releases easily to roll back smoothly into the cartridge when not needed.
- Low profile cartridge and side tracks in white powder coated aluminium. Minimum width available 450mm.
- Maximum size 1230mm wide x 1500mm high.
- Brush pile in side tracks for further protection.
- Black insect mesh.

## Benefits

- Mesh screen retracts smoothly into its cartridge when not in use.
- Discreet slim line side tracks.
- Ideal for use in the office or at home.
- Easy access to open and close windows.
- Made-to-measure (supplied ready for you to fit).
- DIY Kit in pre-made size can be adjusted. Experienced skill level required.



## Measuring for Face Fit

The width of the cartridge is the critical measurement – it cannot be changed after it has been made.

Measure the width of the aperture plus any bevelled edges on the window frame. Add 25mm of flat surface on each side (50mm total) to fit the tracks.

Measure the height of the aperture plus any bevelled edges on the window frame. Add 45mm flat surface at the top for the cartridge and 10mm at the bottom for the closer bar to seal against.

The side tracks need to end at least 10mm past the edge of the aperture at the bottom to provide a seal. More can be added if space allows.

If fitting to the wall outside the reveal we suggest you add an additional 25mm of flat surface on each side to avoid fixing too close to the edge of the reveal.

*Made-to-Measure - we will make to the exact size you give us.*

Width: Aperture (and bevelled edges) + 50mm of flat surface = \_\_\_\_\_ mm

Height: Aperture (and bevelled edges) + 55mm of flat surface = \_\_\_\_\_ mm

## Measuring for Reveal Fit

Measure the minimum width of the aperture; we suggest you take three measurements – top, middle and bottom. Use the smallest measurement.

Measure the minimum height of the aperture; we suggest you take three measurements – left, middle and right. Use the smallest measurement.

*Made-to-measure – we will make to the exact size you give us.*

Width: Aperture = \_\_\_\_\_ mm

Height: Aperture = \_\_\_\_\_ mm

