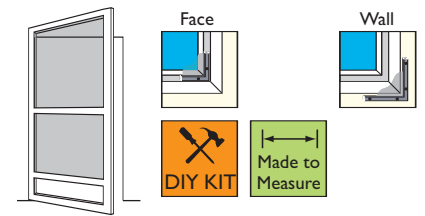


Aluminium Hinged Door Screen Domestic



Features

Elegant hinged door screen, which face fits, inside or outside to existing frame, or to the wall outside the reveal. If your door opens out the screen will be fitted on the inside and visa versa.

Choice of white or brown powder coated aluminium, with grey insect mesh as standard.

Supplied with a single midbar and a kick plate at the bottom to protect the mesh. Although this is a budget solution suitable for light domestic use the powder coated aluminium profile is of high quality and will be suitable for most home use.

Benefits

Easy access through the doorway.

Made-to-measure (supplied ready for you to fit) or DIY Kit (for you to make and fit) Maximum size 920mm wide x 2100mm high.

Measuring

Measure the width of the aperture plus any bevelled edges on the door frame. Add 10mm of flat surface on each side (for the screen frame to rest against). Measure the height of the aperture plus any bevelled edges at the top of the door frame.

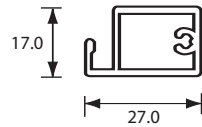
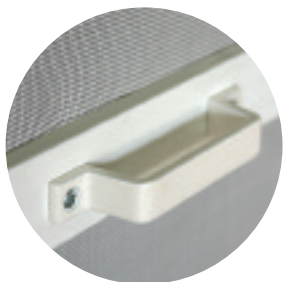
Add 10mm of flat surface at the top of the door (for the screen frame to rest against).

Made-to-measure – we will make to the exact size you tell us.

DIY Kit – one size available.

Width: Aperture (and bevelled edges) + 20mm of flat surface = ____ mm

Height: Aperture (and bevelled edge) + 10mm of flat surface = ____ mm



Additionally

Ensure you have an additional 13mm of flat surface for the hinges and 13mm for the magnetic catch – do not include these amounts in the manufacturing measurements you give us.

If your door handle extends more than 10mm beyond the flat surface you will need to build a sub-frame to bring the screen away from the door handle when it is closed.

We provide two handles with each door screen, one for each side. The handles extend 22mm from the face of the door screen.

Domestic Door Screen

