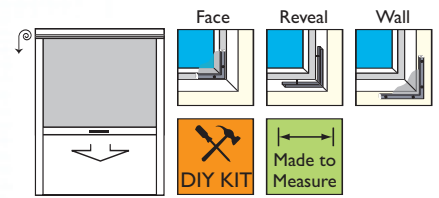


# Roller Window and Door Screens

## Wind Resistant Range

### Top Mounted - Pull Down

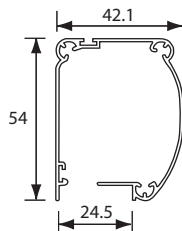


#### Features

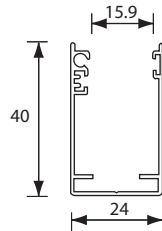
Fits either inside or outside. If your window or door opens outwards the screen will be fitted on the inside and vice versa.  
 Window screens can be Reveal fitted or Face fitted to the existing frame or to the wall outside the Reveal. Door screens can only be Reveal fitted.  
 Windows fitted inside are operated with a spring assisted chain.  
 Windows fitted externally are operated with a pull cord and a bottom bar.  
 Doors fitted either inside or externally are operated with a spring assisted chain.  
 The screen is easy to release and rolls back smoothly into its cartridge.  
 Cartridge and side tracks come in white or brown.  
 Minimum width available 520mm. Maximum size 2000mm wide x 2480mm high.  
 Grey insect mesh only.

#### Benefits

Anti-wind brush strips hold the mesh firmly in the side tracks even in windy conditions, making this our most robust roller screen.  
 Neat fly screen retracts discreetly into its cartridge when not in use.  
 Ideal for use in the office or at home.  
 Easy access to open and close windows and doors.  
 Made-to-measure (supplied ready for you to fit) or DIY Kit (for you to make and fit) allowing you to adjust both the cartridge width and the track height on site.  
 This Pull Down screen does not have a track along the sill or threshold. If it is used to screen a doorway it allows uninterrupted access through the opening.



Cassette dimensions



Side track dimensions

#### Measuring for Reveal Fit - Window and Door

Measure the minimum width of the reveal; we suggest you take three measurements – top, middle and bottom. The cartridge will be made to fit the smallest measurement.  
 Measure the minimum height of the reveal; we suggest you take three measurements – left, middle and right. The side tracks will be adjusted to fit the smallest measurement.  
 Made-to-measure – we will make to the exact size you tell us.  
 DIY Kit - order the next larger size kit.

Width: Smallest width of reveal = \_\_\_\_ mm

Height: Smallest height of reveal = \_\_\_\_ mm

#### Measuring for Face Fit - Window only

Measure the width of the aperture, plus any bevelled edges on the window frame. Add 40mm of flat surface on each side to fit the tracks (if you do not have enough space you can have as little as 20mm on each side to fit the tracks but they will overlap some of the aperture).  
 Measure the height of the aperture, plus any bevelled edges on the window frame. Add flat surface for the cartridge to fit to – ideally 50mm of frame at the top of the window is needed (you can have as little as 10mm but the cartridge will overlap some of the aperture).  
 Made-to-measure – we will make to the exact size you tell us.  
 DIY Kit - order the next larger size kit.

Width: Aperture (and bevelled edges) + 40 to 80mm of flat surface = \_\_\_\_ mm

Height: Aperture (and bevelled edges) + 10 to 50mm of flat surface = \_\_\_\_ mm

Additionally:

Optional face fitting brackets are supplied to provide additional support if required. To use them ensure you have an additional 20mm of flat surface above the cartridge - do not include this amount in the manufacturing measurements you give us. It is possible to face fit the screens without the brackets.

